



Southern Nuclear Imaging.

Winter Update: 2005 .

Illawarra Nuclear Imaging; Canterbury Bankstown Nuclear Imaging; Shoalhaven Nuclear Imaging and St. George Nuclear Imaging.
Dr. Bob Dickinson FRACP FRACR; Dr. Phil Monaghan FRACP; Dr. Norm Lyons FRACP and Dr. Pat Donnelly FRACP.

www.nuclearimaging.com.au



Illawarra Nuclear Imaging:
Excellent access and parking available.
89 Smith Street Wollongong. Ph. 42261755



Shoalhaven Nuclear Imaging:
Standish Medical Centre
Level 2, 33 Berry St. Nowra. Ph. 44231944



Canterbury Bankstown Nuclear Imaging:
Old World Charm near "The Square".
56 Meredith Street Bankstown. Ph. 97084555



St. George Nuclear Imaging:
Aesthetic Day Surgery Building
L.2/14 Kensington Street Kogarah Ph: 95887600

Almost 20 years Providing Quality Nuclear Medicine Services to the Area South of Sydney

Southern Nuclear Imaging's Group of Nuclear Medicine practices started with the establishment of St George Nuclear Imaging at Kogarah in 1987. We now have four well established centres providing the full range of Nuclear Medicine procedures. They are in Bankstown (Canterbury Bankstown Nuclear Imaging), Wollongong (Illawarra Nuclear Imaging), Kogarah (St George Nuclear Imaging) and Nowra (Shoalhaven Nuclear Imaging).

GENERAL INFORMATION

1. Welcome to Dr Pat Donnelly.
2. Promedicus.net Secure Email Reports
3. Our Web Site www.nuclearimaging.com.au
4. Equipment Upgrades
5. Future Topics

The new Dual Head E-Cam located at Illawarra Nuclear Imaging in Wollongong.



General Information

Welcome to Dr Patrick Donnelly: Nuclear Medicine Physician.

We are very fortunate to have gained the services of Pat Donnelly as from January this year. He joins Norm Lyons, Phil Monaghan and Bob Dickinson. With Pat on board we have been able to improve efficiency leading to reduced waiting times for scans. This means that we can provide “**same day**” or next day **appointments** for almost all scan types at all of our locations.

Promedicus.net Secure Email Reports: <http://www.promedicus.com.au/frame.html>

In response to requests from our referrers, we provide secure encrypted email report delivery through Promedicus.net from **Shoalhaven and Illawarra Nuclear Imaging** practices. This initiative has gained widespread and enthusiastic support. This service is provided by SNI free charge to our referrers. Please go to our Web Site for details



http://www.nuclearimaging.com.au/shoal_reports.htm or call Gary at Illawarra Nuclear Imaging (42261755) for an overview of how to get connected. Promedicus.net support most clinical software packages.

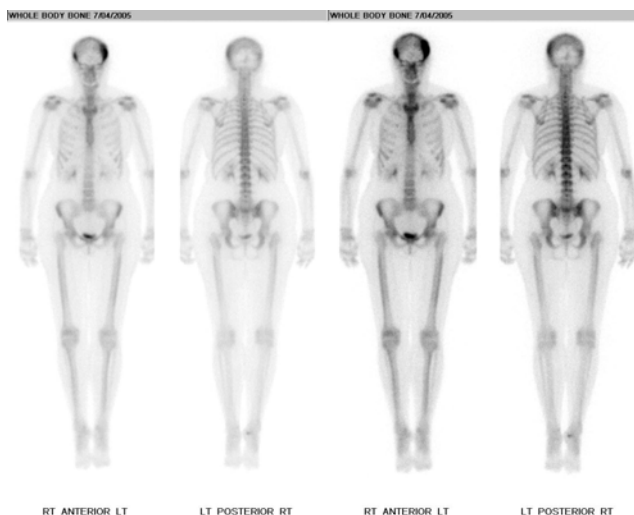
Our Web Site: www.nuclearimaging.com.au

This long established resource should help to answer all of your (and your patient’s) questions. It contains almost 30 pages of information ranging from a basic “What is Nuclear Medicine” brochure <http://www.nuclearimaging.com.au/whatis.htm> through to up-to-date lists of drugs and other preparation information pertaining to specific scans <http://www.nuclearimaging.com.au/drugs.htm> . Also, follow the links to other nuclear medicine related Web sites from <http://www.nuclearimaging.com.au/other.htm> .

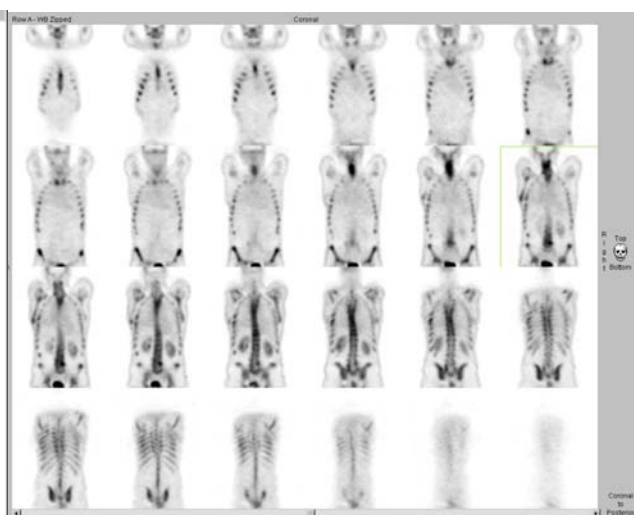
Equipment Upgrades: Illawarra Nuclear Imaging

The recently installed dual head E-cam and associated processing and imaging workstations continue to maintain our policy of maintaining state-of-the-art services to our referrers. Whole Body SPECT for Bone, Gallium, Thallium and similar scans are now standard procedure. Advanced cardiac processing is also used for all Myocardial Perfusion scans. Also, we can provide DICOM compliant images on a **CD Rom** with image viewing software included.

The Original Whole Body Bone Scan



Whole Body SPECT Bone Scan Images (Coronal)



Future Topics:

Lung SPECT: Recent research suggests significantly improved sensitivity and specificity for V/Q Lung scans. What is it? How does it work and what do the scans look like? All will be revealed.

Whole Body SPECT: Unprecedented image information from “Eyes to Thighs” for Bone, Gallium, Thallium and other scan types. Overview and images will appear in a future issue.

Myocardial Perfusion Scanning: Understanding the Cedars Cardiac package output.

Case Studies: The interesting and the unusual. A brief simple overview will be provided, with images.

Nuclear Medicine Quiz: Test your knowledge with a fun quiz on Nuclear Medicine Topics.