



Illawarra Nuclear Imaging

SNIG: Spring 2009



Dr. Phil Monaghan FRACP; Dr. Bob Dickinson FRACP FRACR; Dr. Pat Donnelly FRACP;
Bill Mouratidis FRACP; Dr. George Larcos FRACP. Details www.snig.com.au



Update on Illawarra Nuclear Imaging

As you will be aware, after **twenty one years** of continuous service to the Illawarra area, we continue to upgrade our Nuclear Medicine practice at **89 Smith Street Wollongong** to provide comprehensive “state of the art” nuclear medicine procedures and quality **patient centred care**.

In keeping with this philosophy, Southern Nuclear Imaging has been very busy this year planning, installing and commissioning a virtual private network between all of our SNI sites. This will facilitate many improvements to our service to you and subsequently to your patient.

The proposed improvements include: the introduction of updated and **improved secure electronic document delivery** (introducing **ARGUS Connect**), improved collaborative reporting between our nuclear medicine physicians (including urgent reports) and most importantly, for all concerned, a commitment to provide access **for referrers to their patient’s scans and reports over the Web (WWW)**.

ARGUS Connect: What is it? How can it help you?

Argus is a communication tool kit that runs on any computer alongside existing clinical software and provides safe, simple and secure transfer of clinical and patient data. Argus uses email as the transport mechanism for clinical document transfer, but overlays a range of security and reliability features that enhance email to become a safe mechanism for clinical use. Patient privacy and security is assured by use of PKI encryption, computer-to-computer interoperability is provided by the HL7 Standard message structure.

The **Argus suite** (<http://www.argusconnect.com.au/content/argus-general-practitioners>)

(<http://www.argusconnect.com.au/content/argus-medical-specialists>) has been designed so that there are products that suit all professional health practices, including specialists and GP practices.

Put **more simply**, through ARGUS Connect we will be able to securely send (email) your **Illawarra Nuclear Imaging reports** to your practice where you can seamlessly import them into your patients’ file within your practice management system (similarly to Promedius.net). This may be **Medical Director** or any one of the other systems available. When you open your patient’s file you will have the report immediately available to view.

This opens up another potential opportunity. Either from a link within the patient’s specific report or simply by providing direct access to your personal folder (once set up) on our server, we hope to provide 24/7 Web Based access to your patient’s images. We are hoping to recruit a number of referrers to test out the available options for our proposed electronic document viewing (and if desired image delivery).

Direct Access to your Patient's Scans Electronically

As notified in our previous email a number of options are being explored to provide you and your colleague's simple, fast, secure and user friendly access to digital copies of patient's scans. We are aware of the increasing number of practices who are going "paperless" and some who prefer to be "filmless". We anticipate that eventually everyone will see the benefits of easily accessed and stored e-film. With our proposal it should not be necessary to download any data to your workstation. We anticipate that you will be able to view the images either as jpegs (with savescreens [pictures] which are exactly the same as the film or paper hardcopy) or AVI's (the same as the current coloured laminated paper version yet a controllable "movie" version) directly from our server. Examples of movie (AVI's) displays could be your patient's Gated Heart Pool Scan or even the comparison or quantification displays of the myocardial perfusion scans. This will bring the images to life; something impossible (or at least difficult) with hard copy.

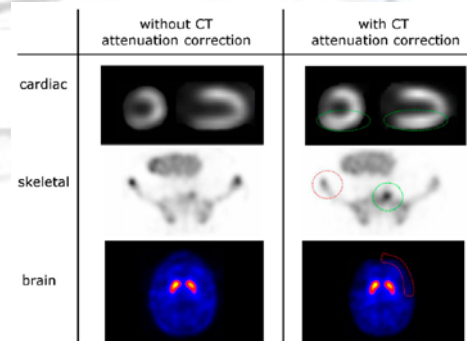
Illawarra Nuclear Artery: Aboriginal Artwork at Illawarra Nuclear Imaging (INI)

Providing your patients with a comfortable, convenient and pleasant experience is amongst our highest priorities. With this in mind, we have continued with our comprehensive **modernisation and refurbishment** of the Smith Street premises. The most recent change has been the display of high quality original **Aboriginal artwork** throughout our building (see the photo in the newsletter header). Some of the major pieces also have a short biography on the artist. This quality display has even led to a number of interested persons simply paying us a visit to see, read the story behind and discuss (with Bob Dickinson) the artworks. We are very proud of the new look Illawarra Nuclear Imaging and welcome anyone to come and have a look around, view the artworks, meet the staff and maybe ask those gnawing Nuclear Medicine related questions that you may have. Particularly those related to the new technologies.



Single Photon Emission Computed Tomography/Computed Tomography (SPECT/CT)

The utility of SPECT/CT (Hybrid Imaging) has exceeded all expectations. Our General Electric **Hawkeye 4 hybrid camera** has revolutionised our practise of nuclear medicine and improve the diagnostic confidence through combined CT **localisation** and **attenuation correction** of our tomographic images. As you have noticed on the images you receive, our "hot (or cold) spots" can now be seen with anatomical details provided by the low dose CT. For myocardial perfusion imaging, you will notice "CORRECTED" and "NON-CORRECTED" comparison (Stress/Rest) images. The "correction" is achieved through the low dose CT attenuation correction. Non-corrected images are displayed to highlight the effect of attenuation on the images.



Information for You and Your Patient

The Australian and New Zealand Association of Physicians in Nuclear Medicine have produced two brochures aimed at demystifying nuclear medicine for the patient and providing a concise and up-to-date guide to referrers. We will attempt to ensure that these are freely available to all. Meanwhile, have a look at www.snig.com.au and locate .pdf versions of the documents.

Southern Nuclear Imaging Practices-

Illawarra Nuclear Imaging (Wollongong):
89 Smith Street Wollongong 2500

Ph- 02 42261755; Fax- 02 42273164

Bateman's Bay Regional Nuclear Imaging (Bateman's Bay)

Ph- 02 44726012; Fax- 02 44727122

Canterbury Bankstown Nuclear Imaging (Bankstown):

Ph- 02 97084555; Fax- 02 97906064

Shoalhaven Nuclear Imaging (Nowra):

Ph- 02 44231944; Fax- 02 44230610

www.snig.com.au