



Shoalhaven Nuclear Imaging

SNIG: Spring 2009



Dr. Phil Monaghan FRACP; Dr. Bob Dickinson FRACP FRACR; Dr. Pat Donnelly FRACP;
Dr. George Larcos FRACP. Details www.snig.com.au



Update on Shoalhaven Nuclear Imaging

As you will be aware, after nearly 20 years of continuous service to the Shoalhaven and the South Coast regions of NSW, we continue to upgrade our Nuclear Medicine practice at **33Berry Street Nowra** to provide comprehensive “state of the art” nuclear medicine procedures and quality **patient centred care**. In keeping with this philosophy, Southern Nuclear Imaging has been very busy this year planning, installing and commissioning a virtual private network within and between all of our SNI sites.

This will facilitate many improvements to our service to you and to your patient.

The proposed improvements include: the introduction of updated and **improved secure electronic document delivery** (introducing **ARGUS Connect**), improved collaborative and urgent reporting between our nuclear medicine physicians and most importantly, for all concerned, a commitment to providing access for our referrers to **their patient’s scans and reports over the Web (WWW)**.

ARGUS Connect: What is it? How can it help you?

Most of you will be familiar with Argus Connect. For those who are not sure; Argus is a communication tool kit that runs on any computer alongside existing clinical software and provides safe, simple and secure transfer of clinical and patient data. Argus uses email as the transport mechanism for clinical document transfer, but overlays a range of security and reliability features that enhance email to become a safe mechanism for clinical use. Patient privacy and security is assured by use of PKI encryption, computer-to-computer interoperability is provided by the HL7 Standard message.

The **Argus suite** (<http://www.argusconnect.com.au/content/argus-general-practitioners>)

(<http://www.argusconnect.com.au/content/argus-medical-specialists>) has been designed so that there are products that suit the whole range of professional health practices, from specialists and single GP practices to large hospitals.

Put **more simply**, through ARGUS Connect we will be able to securely send (email) your **Shoalhaven Nuclear Imaging reports** to your practice where you can seamlessly import them into your patients’ file within your practice management system. This may be **Medical Director** or any one of the other systems available. When you open your patient’s file you will have the report immediately available to view.

This opens up another potential opportunity. Either from a link within the patient’s specific report or simply by providing direct access to your personal folder (once set up) on our server, we hope to provide 24/7 Web Based access to your patient’s images.

Direct Access to your Patient's Scans Electronically

A number of options are being explored to provide you and your colleague's simple, fast and user friendly access to digital copies of patient's scans. As stated previously, we are aware of the increasing number of practices who are going "paperless" and some who prefer to be "filmless". We anticipate that eventually everyone will see the benefits of easily accessed and stored e-film. With our proposal it will not be necessary to download any data to your workstation. We anticipate that you will be able to view the images either as jpegs (savescreens [pictures] which are exactly the same as the film or paper hardcopy) or AVI's (the same as the current coloured laminated paper version yet a controllable "movie" version) directly from our server. Examples of movie (AVI's) displays could be your patient's Gated Heart Pool Scan or even the comparison or quantification displays of the myocardial perfusion scans. This will bring the images to life; something impossible with hard copy.

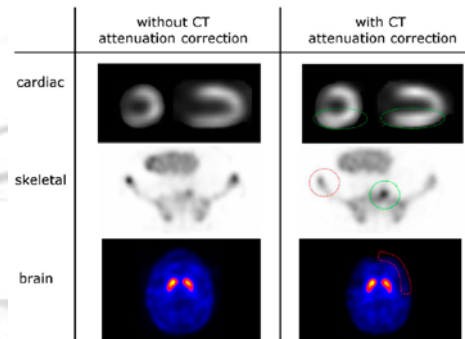
Shoalhaven Nuclear Artery: Aboriginal Artwork at Shoalhaven Nuclear Imaging

Providing your patients with a comfortable, convenient and pleasant experience is amongst our highest priorities. With this in mind, we have continued with our **modernisation and refurbishment** of the Berry Street premises. The most recent change has been the display of high quality original **Aboriginal artwork** in the waiting area.

We are very proud of the new look Shoalhaven Nuclear Imaging and welcome anyone to come and have a look around, view the artworks, meet the staff and maybe ask those gnawing Nuclear Medicine related questions that you may have. Particularly those related to the new technologies (e.g. hybrid imaging).

Single Photon Emission Computed Tomography/Computed Tomography (SPECT/CT)

The utility of SPECT/CT (Hybrid Imaging) has exceeded all expectations. Our General Electric **Hawkeye 4 hybrid camera** has revolutionised our practice of nuclear medicine and improve the diagnostic confidence through combined CT **localisation** and **attenuation correction** of our tomographic images. As you have noticed on the images you receive, our "hot (or cold) spots" can now be seen with anatomical details provided by the low dose CT. For myocardial perfusion imaging, you will notice "CORRECTED" and "NON-CORRECTED" comparison (Stress/Rest) images. The "correction" is achieved through the low dose CT attenuation correction. Non-corrected images are displayed to highlight the effect of attenuation on the images. This is particularly evident in the **Inferior Wall of the heart** in myocardial perfusion scans. Maybe take the time to compare the two views. In experienced hands the improvement in diagnostic confidence is remarkable. See figure (above) for examples including bone and brain studies.



Information for You and Your Patient

The Australian and New Zealand Association of Physicians in Nuclear Medicine have produced two brochures aimed at demystifying nuclear medicine for the patient and providing a concise and up-to-date guide to referrers. We will attempt to ensure that these are freely available to all. Meanwhile, have a look at www.snig.com.au and locate .pdf versions of the documents.

Shoalhaven Nuclear Imaging (Nowra):
Suite 2, Standish Medical Centre, 33 Berry Street Nowra.

Ph- 02 44231944; Fax- 02 44230610

Batemans Bay Regional Nuclear Imaging (Batemans Bay) Ph- 02 44726012; Fax- 02 44727122

Illawarra Nuclear Imaging (Wollongong): Ph- 02 42261755; Fax- 02 42273164

Canterbury Bankstown Nuclear Imaging (Bankstown): Ph- 02 97084555; Fax- 02 97906064

www.snig.com.au